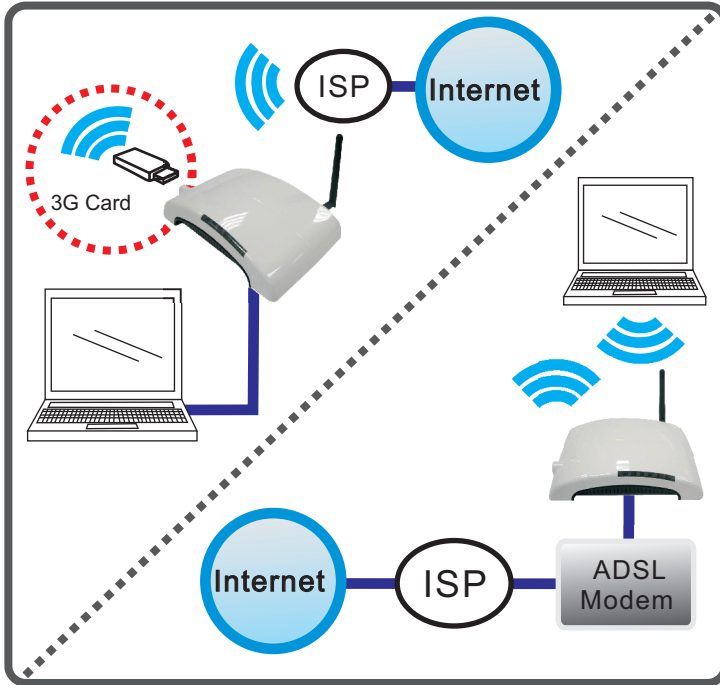


Wireless 802.11n 3G Router with USB2.0 Port

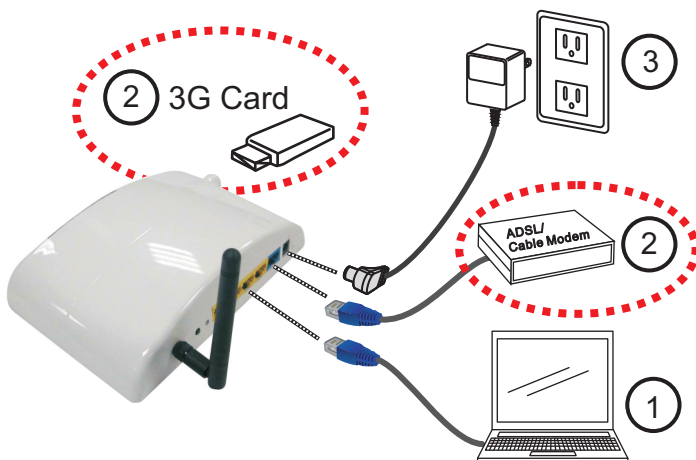
Quick Install

1 Application Diagram



2 Hardware Connection

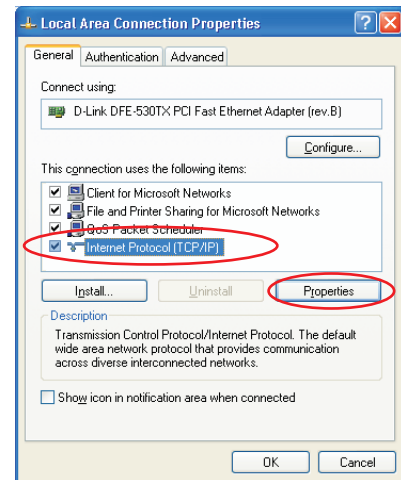
- 1 Connect one end of the Ethernet cable to the LAN port of the Wireless Router, another end to your PC or notebook.
- 2 Select one way to make a connection to Internet:
 - ▶ Connect Ethernet cable one end to the WAN port of the Wireless Router, the other end to the ADSL or cable modem.
 - ▶ Or you can insert USB 3G card (that provide by your ISP) into the USB port.
- 3 Finally, connect the Wireless Router with a power to an outlet.



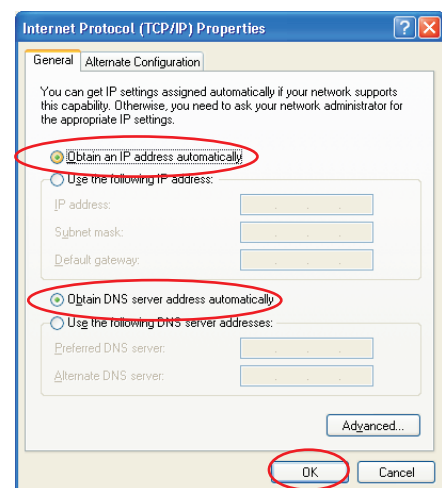
3 PC Configuration

Before setting up the Wireless Router, make sure your PCs are configured to "Obtain an IP address automatically."

- 1 Click **Start > Control Panel > Network and Internet Connections > (Right-click on) Local Area Connection > Properties.**
- 2 Make sure the box next to **Internet Protocol (TCP/IP)** is checked. Select the **Internet Protocol (TCP/IP)** and click the **Properties** button.



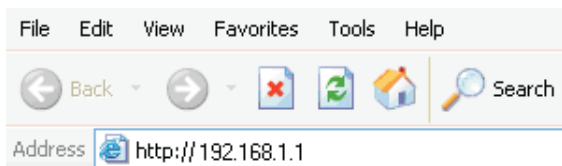
- 3 Select "**Obtain an IP address automatically**" and "**Obtain DNS server address automatically.**" Then click **OK** to complete the PC configuration.



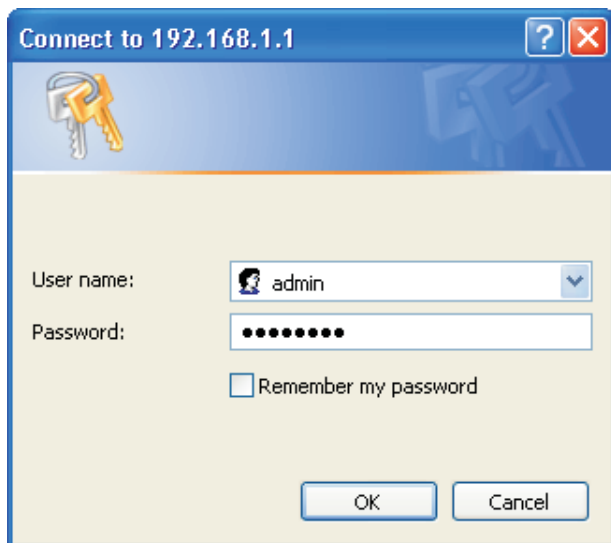
4 Router Configuration

- 1 For Windows 2000 and XP users, your computer should obtain an IP address automatically from the Wireless Router's DHCP server, after you've done the above steps and restarted your computer.

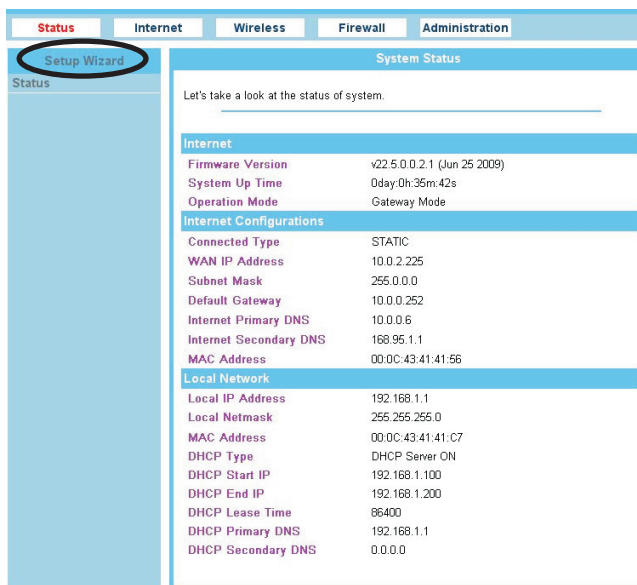
- 2 Start your WEB browser. In the address box, enter the following: http://192.168.1.1



- 3 After connected successfully, the following screen will show up. Simply enter the username "admin" and password "password" to login.



- 4 Click the **Setup Wizard** item that provides a primary configuration of this device. You may enter each screen to change the default settings.



Note: Please consult the User's Manual in the included CD-ROM for detailed settings.